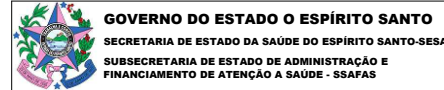
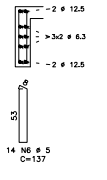
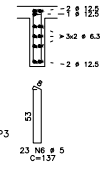
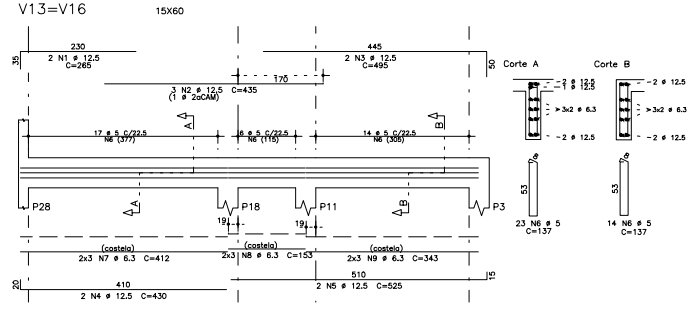
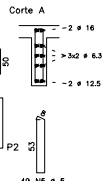
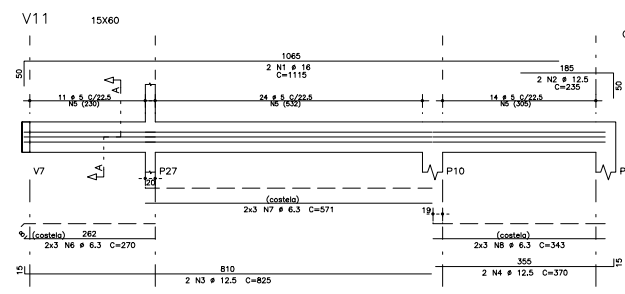
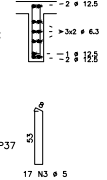
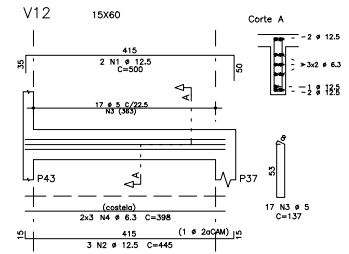
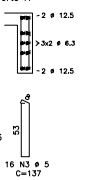
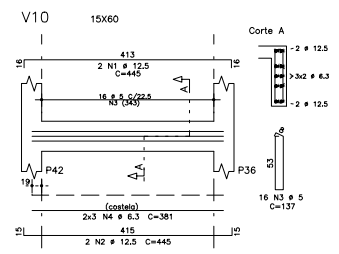
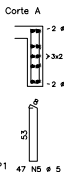
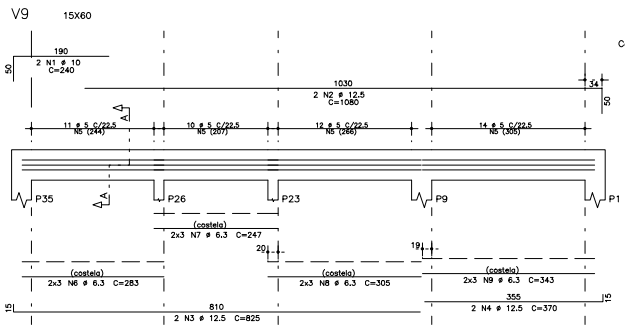


AÇO	POS	BIT	QUANT	COMPRIMENTO	
				UNIT	TOTAL
		mm		cm	cm
V8					
60B	1	5	2	340	680
50A	2	10	2	170	340
50A	3	12.5	3	950	2850
60B	4	5	2	320	640
60B	5	12.5	2	975	2925
60B	6	5	2	320	640
50A	7	12.5	2	175	350
50A	8	12.5	2	640	1280
50A	9	12.5	2	505	1010
50A	10	12.5	2	725	1450
50A	11	12.5	2	550	1100
50A	12	12.5	2	595	1190
60B	13	5	128	137	17536
50A	14	6.3	6	370	2220
50A	15	6.3	6	512	3072
50A	16	6.3	6	731	4386
50A	17	6.3	6	557	3342
50A	18	6.3	6	565	3390
V9					
50A	1	10	2	240	480
50A	2	12.5	2	1080	2160
50A	3	12.5	2	825	1650
50A	4	12.5	2	370	740
60B	5	5	47	137	6439
50A	6	6.3	6	283	1698
50A	7	6.3	6	247	1482
50A	8	6.3	6	305	1830
50A	9	6.3	6	343	2058
V10					
50A	1	12.5	2	445	890
50A	2	12.5	2	445	890
60B	3	5	16	137	2192
50A	4	6.3	6	381	2286
V11					
50A	1	16	2	1115	2230
50A	2	12.5	2	235	470
50A	3	12.5	2	825	1650
50A	4	12.5	2	370	740
60B	5	5	49	137	6713
50A	6	6.3	6	270	1620
50A	7	6.3	6	571	3426
50A	8	6.3	6	343	2058
V12					
50A	1	12.5	2	580	1060
50A	2	12.5	3	445	1335
60B	3	5	17	137	2329
50A	4	6.3	6	398	2388
V13=V16					
50A	1	12.5	4	265	1060
50A	2	12.5	6	435	2610
50A	3	12.5	4	495	1980
50A	4	12.5	4	430	1720
50A	5	12.5	4	525	2100
60B	6	5	74	137	10198
50A	7	6.3	12	412	4944
50A	8	6.3	12	153	1836
50A	9	6.3	12	343	4116

RESUMO DE AÇO				
AÇO	BIT	CMPR	CMPR	PESO
		mm	m	kgf
60B	5	472	73	73
50A	10	8	117	5
50A	12.5	332	319	319
50A	16	22	35	35
Peso Total		60B =	73	kgf
		50A =	476	kgf



GOVERNO DO ESTADO DO ESPÍRITO SANTO
SECRETARIA DE ESTADO DA SAÚDE DO ESPÍRITO SANTO-SESA
SUBSECRETARIA DE ESTADO DE ADMINISTRAÇÃO E FINANCIAMENTO DE ATENÇÃO À SAÚDE - SSAFAS

PLANO DECENAL DE ATENÇÃO PRIMÁRIA À SAÚDE - APS+10

EMPREENHAMENTO:
APS - UNIDADE DE ATENÇÃO PRIMÁRIA À SAÚDE

PROJETO:
3 ESF - UNIDADE DE 3 EQUIPES

LOCAL:
 PROJETO PADRÃO - TPO 1

SECRETÁRIO DA SESA: NÉSIO FERNANDES DE MEDEIROS JUNIOR DISCIPLINA: PROJETO ESTRUTURAL

SUBSECRETÁRIO DA SESA: ERICO SANDROGRO FASE: PROJETO EXECUTIVO

GERENTE DA GEAT: ANDRÉ LEMAS VAREJÃO

AUTOR DO PROJETO: MICHELE MARIA ALVES CREA (EMPRESA): ES-15617

TÍTULO: ARMAÇÃO DAS VIGAS DA COBERTURA III CREA (RESPI): ES-0202420

DATA: NOV./2022 ESCALA: INDICADA FORMAÇÃO: A1 UNIDADE: CM PRONÓCIO: 12/15