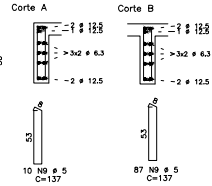
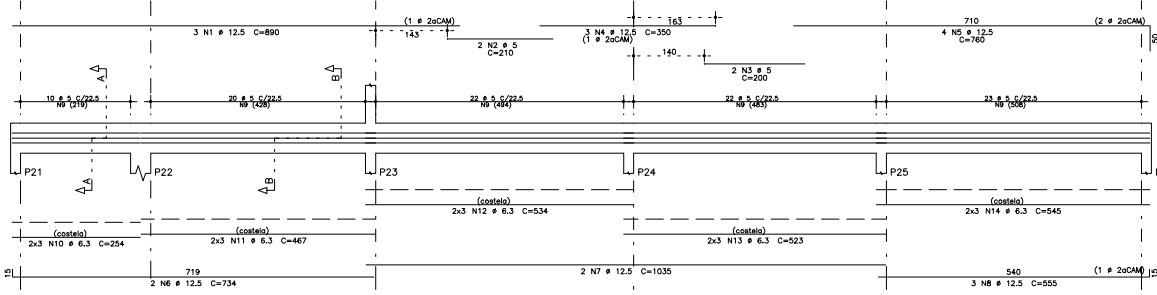
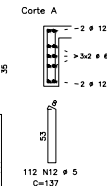
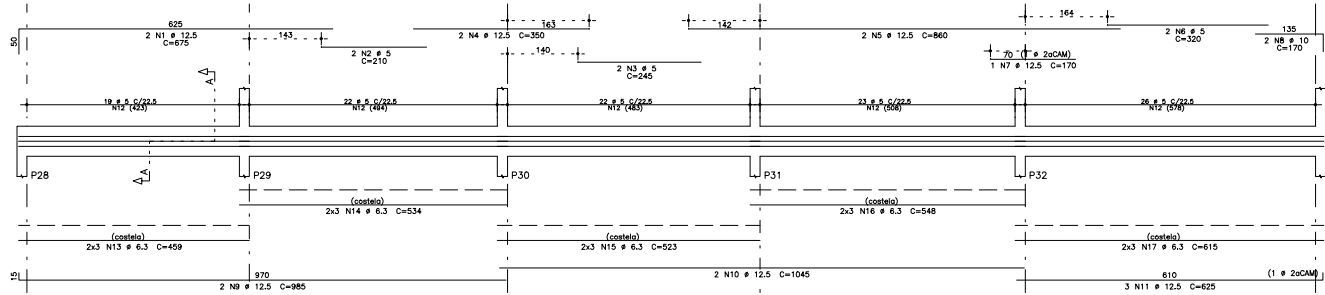


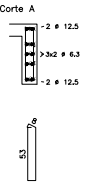
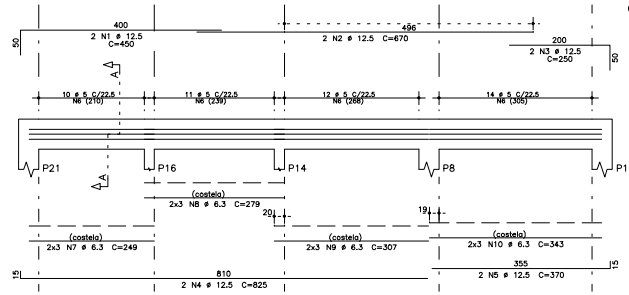
V6 15X60



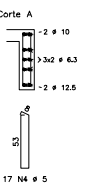
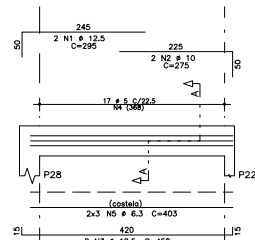
V7 15X60



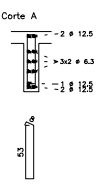
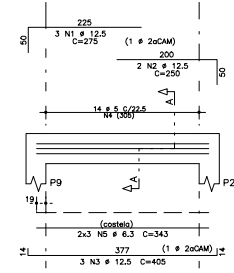
V8 15X60



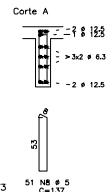
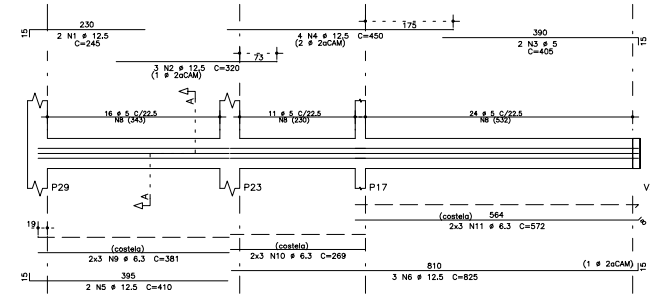
V9 15X60



V10 15X60

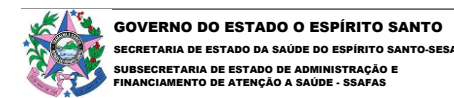


V11 15X60



AÇO	POS	BIT	QUANT	COMPRIMENTO	UNID	TOTAL
		mm		cm	cm	
V6						
50A	1	12.5	3	890	2670	
60B	2	5	2	210	420	
60B	3	5	2	200	400	
50A	4	12.5	3	350	1050	
50A	5	12.5	3	760	2280	
50A	6	12.5	2	734	1468	
50A	7	12.5	2	1030	2060	
50A	8	12.5	3	555	1665	
60B	9	5	97	137	13289	
50A	10	6.3	6	254	1524	
50A	11	6.3	6	467	2802	
50A	12	6.3	6	534	3204	
50A	13	6.3	6	523	3138	
50A	14	6.3	6	545	3270	
V7						
60B	2	5	2	675	1350	
60B	3	5	2	210	420	
50A	4	12.5	2	350	700	
50A	5	12.5	2	860	1720	
60B	6	5	2	300	600	
50A	7	12.5	1	170	170	
50A	8	10	2	170	340	
50A	9	12.5	2	985	1970	
50A	10	12.5	2	1040	2080	
50A	11	12.5	3	625	1875	
60B	12	5	112	137	15344	
50A	13	6.3	6	459	2754	
50A	14	6.3	6	534	3204	
50A	15	6.3	6	503	3138	
50A	16	6.3	6	548	3288	
50A	17	6.3	6	615	3690	
V8						
50A	1	12.5	2	450	900	
50A	2	12.5	2	670	1340	
50A	3	12.5	2	250	500	
50A	4	12.5	2	825	1650	
50A	5	12.5	2	370	740	
60B	6	5	47	137	6439	
50A	7	6.3	6	249	1494	
50A	8	6.3	6	279	1674	
50A	9	6.3	6	307	1842	
50A	10	6.3	6	343	2058	
V9						
50A	1	12.5	2	295	590	
50A	2	10	2	275	550	
50A	3	12.5	2	450	900	
60B	4	5	17	137	2329	
50A	5	6.3	6	403	2418	
V10						
50A	1	12.5	3	275	825	
50A	2	12.5	2	250	500	
50A	3	12.5	3	405	1215	
60B	4	5	14	137	1918	
50A	5	6.3	6	343	2058	
V11						
50A	1	12.5	2	245	490	
50A	2	12.5	2	320	640	
60B	3	5	2	405	810	
50A	4	12.5	2	450	900	
50A	5	12.5	2	410	820	
50A	6	12.5	3	825	2475	
60B	7	5	51	137	6987	
50A	8	6.3	6	381	2286	
50A	9	6.3	6	289	1734	
50A	10	6.3	6	299	1814	
50A	11	6.3	6	372	2232	

RESUMO DE AÇO			
AÇO	BIT	COEFFR	PESO
	mm	m	kgf
60B	5	485	76
50A	6.3	489	120
50A	10	9	5
50A	12.5	375	361
Peso Total			76 kgf
Peso Total			50A = 487 kgf



GOVERNO DO ESTADO DO ESPÍRITO SANTO
SECRETARIA DE ESTADO DA SAÚDE DO ESPÍRITO SANTO-SES
SUBSECRETARIA DE ESTADO DE ADMINISTRAÇÃO E FINANCIAMENTO DE ATENÇÃO À SAÚDE - SSAFAS

PLANO DECENAL DE ATENÇÃO PRIMÁRIA À SAÚDE - APS-10

EMPREENHAMENTO:
APS - UNIDADE DE ATENÇÃO PRIMÁRIA À SAÚDE

PROJETO:
2 ESF - UNIDADE DE 2 EQUIPES

LOCAL:
 PROJETO PADRÃO - TIPO 1

SECRETÁRIO DA SES: NÉSIO FERREDES DE MEDEIROS JUNIOR
 DISCIPLINA: PROJETO ESTRUTURAL

SUBSECRETÁRIO DA SFAFAS: ERICO SANDRO
 FASE: PROJETO EXECUTIVO

GERENTE DA GEAT: ANDRÉ LEMAS VAREJÃO

AUTOR DO PROJETO: MICHELE MARIA ALVES
 CREA (EMPRESA): ES-15617
 CREA (RES): ES-026242

TÍTULO:
ARMARÇÃO DAS VIGAS DA COBERTURA II

SATA: NOV/2022
 ESCALA: INDICADA
 FÓRMAS: A1
 UNIDADE: CM
 PÁGINA: 10/13